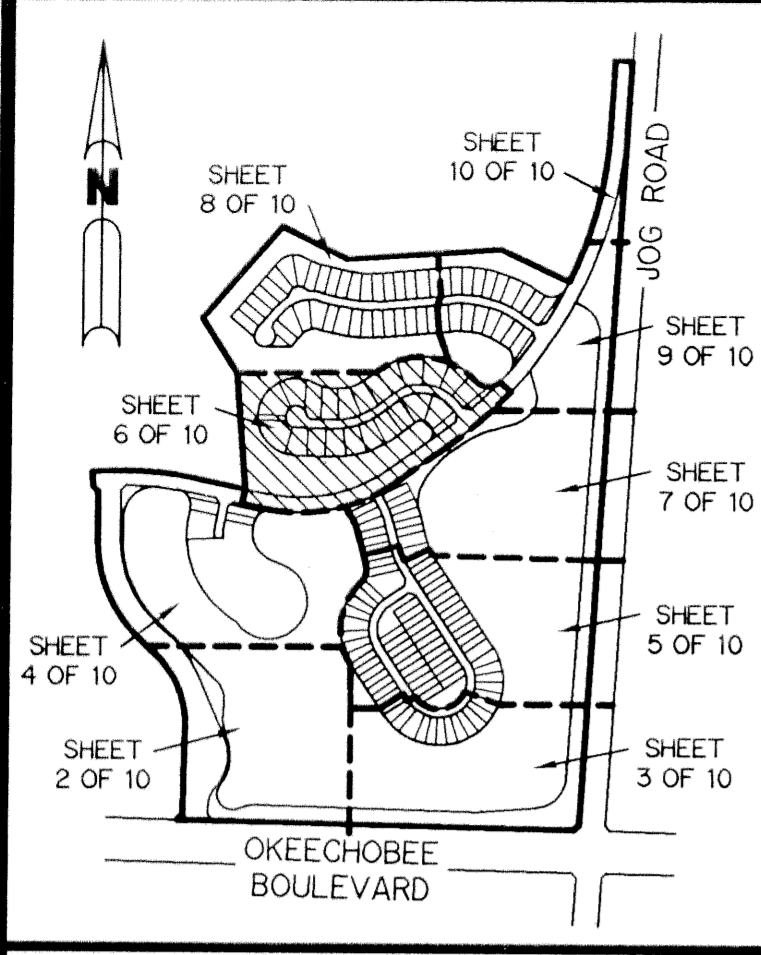


RIVERWALK - PLAT ONE

A PARCEL OF LAND LYING IN SECTION 21, TOWNSHIP 43 SOUTH,
RANGE 42 EAST, CITY OF WEST PALM BEACH,
PALM BEACH COUNTY, FLORIDA.

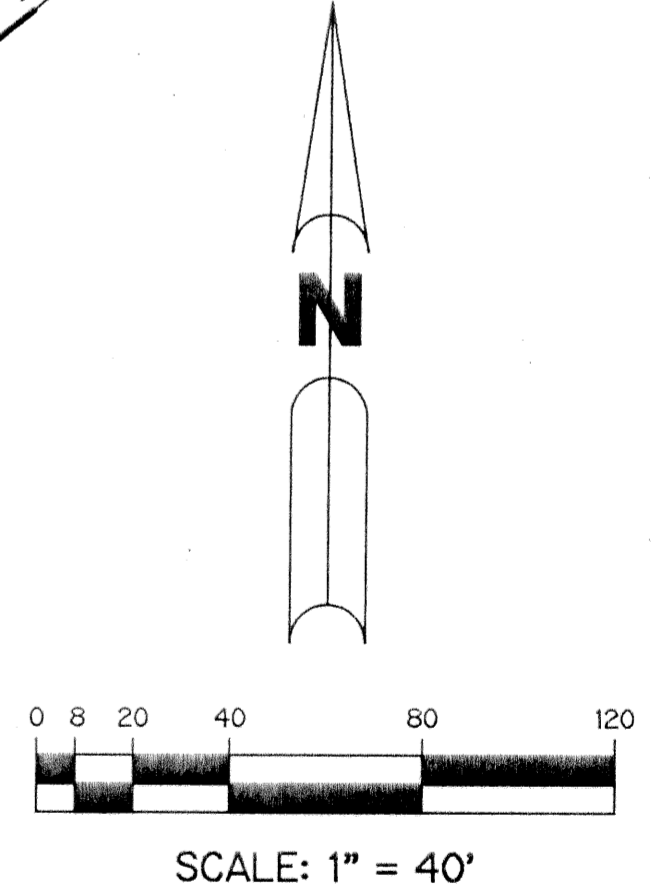
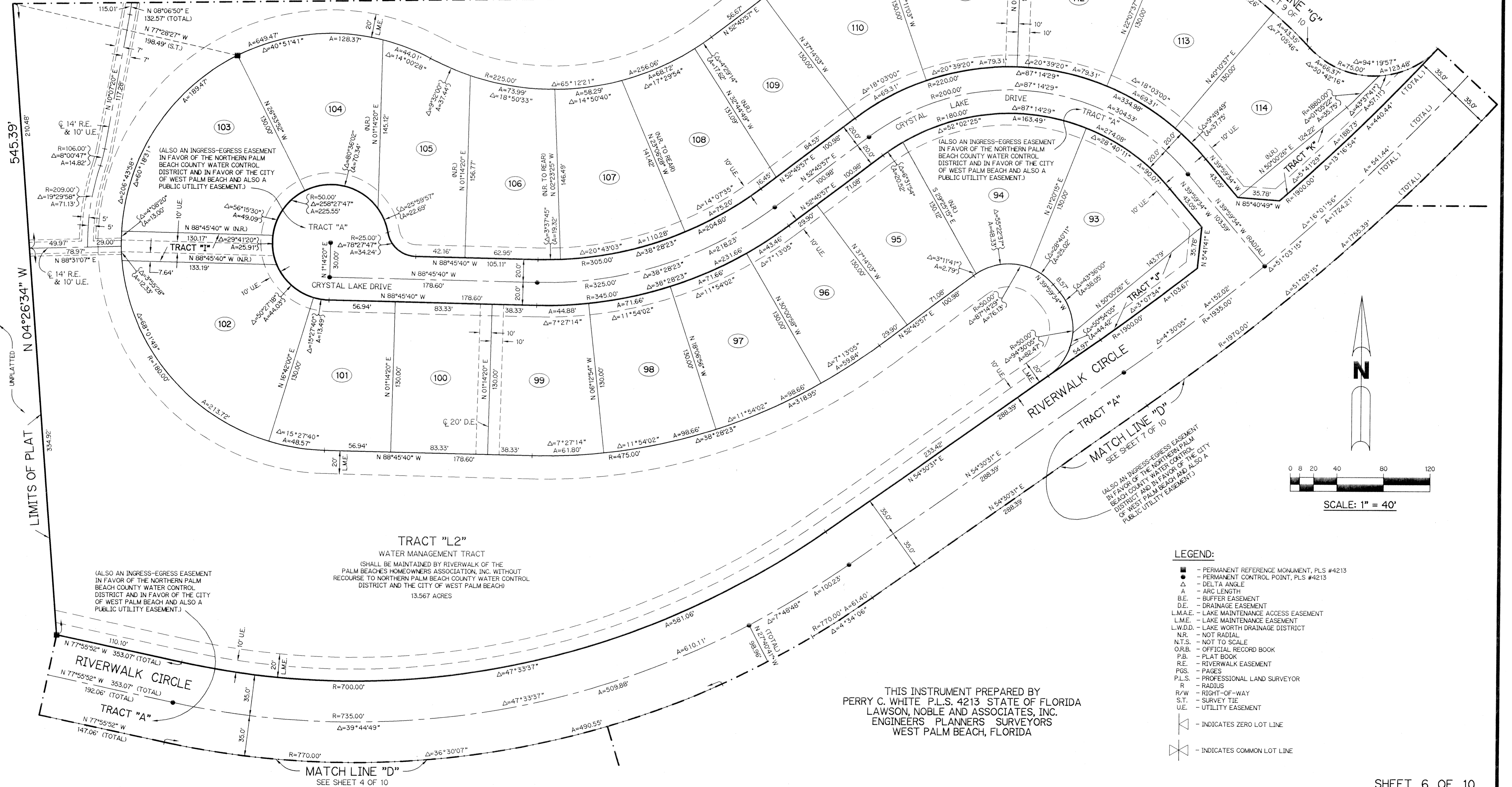
SHEET 6 OF 10 JANUARY, 1995



KEY MAP
NOT TO SCALE

MATCH LINE "G"
SEE SHEET 8 OF 10

MATCH LINE "G"
SEE SHEET 9 OF 10



LEGEND:

- - PERMANENT REFERENCE MONUMENT, PLS #4213
- - PERMANENT CONTROL POINT, PLS #4213
- Δ - DELTA ANGLE
- A - ARC LENGTH
- B.E. - BUFFER EASEMENT
- D.E. - DRAINAGE EASEMENT
- L.M.A.E. - LAKE MAINTENANCE ACCESS EASEMENT
- L.M.E. - LAKE MAINTENANCE EASEMENT
- L.W.D.D. - LAKE WORTH DRAINAGE DISTRICT
- N.R. - NOT RADIAL
- N.T.S. - NOT TO SCALE
- O.R.B. - OFFICIAL RECORD BOOK
- P.B. - PLAT BOOK
- R.E. - RIVERWALK EASEMENT
- PGS. - PAGES
- P.L.S. - PROFESSIONAL LAND SURVEYOR
- R - RADIUS
- R/W - RIGHT-OF-WAY
- S.T. - SURVEY TIE
- U.E. - UTILITY EASEMENT
- ⊥ - INDICATES ZERO LOT LINE
- ⊗ - INDICATES COMMON LOT LINE

THIS INSTRUMENT PREPARED BY
PERRY C. WHITE P.L.S. 4213 STATE OF FLORIDA
LAWSON, NOBLE AND ASSOCIATES, INC.
ENGINEERS PLANNERS SURVEYORS
WEST PALM BEACH, FLORIDA

SUBDIVISION - Riverwalk-Plat One
 BOOK - 74 PAGE - 142
 FLOOD ZONE - FLOOD MAP # -
 QUAD # - ZONING -
 SE - ZIP CODE -
 PUD NAME - CWSAS

(ALSO AN INGRESS-EGRESS EASEMENT
 IN FAVOR OF THE NORTHERN PALM
 BEACH COUNTY WATER CONTROL
 DISTRICT AND IN FAVOR OF THE CITY
 OF WEST PALM BEACH AND ALSO A
 PUBLIC UTILITY EASEMENT.)

TRACT "L2"
 WATER MANAGEMENT TRACT
 (SHALL BE MAINTAINED BY RIVERWALK OF THE
 PALM BEACHES HOMEOWNERS ASSOCIATION, INC. WITHOUT
 RECOURSE TO NORTHERN PALM BEACH COUNTY WATER CONTROL
 DISTRICT AND THE CITY OF WEST PALM BEACH)
 13.567 ACRES

(ALSO AN INGRESS-EGRESS EASEMENT
 IN FAVOR OF THE NORTHERN PALM
 BEACH COUNTY WATER CONTROL
 DISTRICT AND IN FAVOR OF THE CITY
 OF WEST PALM BEACH AND ALSO A
 PUBLIC UTILITY EASEMENT.)

(ALSO AN INGRESS-EGRESS EASEMENT
 IN FAVOR OF THE NORTHERN PALM
 BEACH COUNTY WATER CONTROL
 DISTRICT AND IN FAVOR OF THE CITY
 OF WEST PALM BEACH AND ALSO A
 PUBLIC UTILITY EASEMENT.)

(ALSO AN INGRESS-EGRESS EASEMENT
 IN FAVOR OF THE NORTHERN PALM
 BEACH COUNTY WATER CONTROL
 DISTRICT AND IN FAVOR OF THE CITY
 OF WEST PALM BEACH AND ALSO A
 PUBLIC UTILITY EASEMENT.)